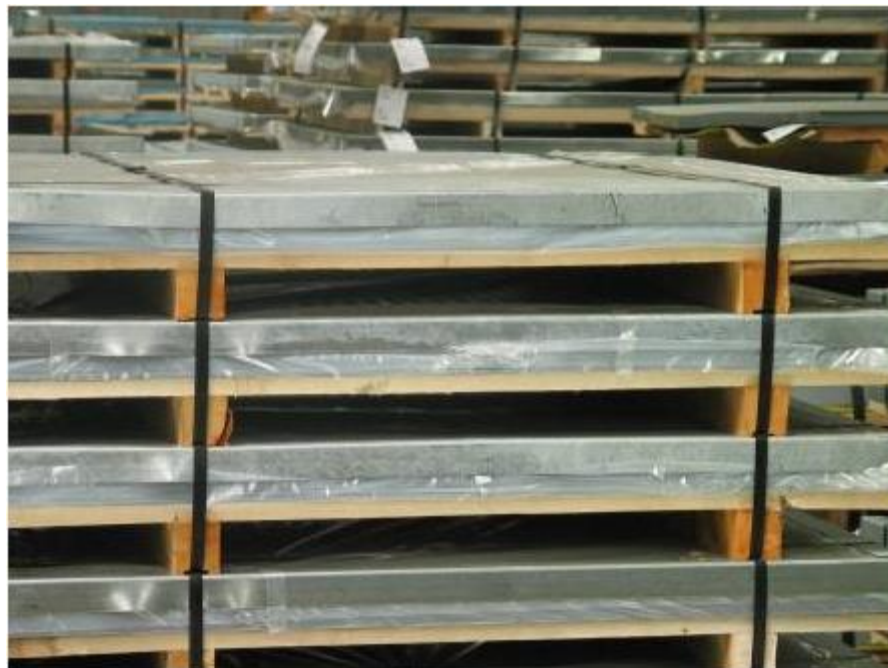


## Páskování nerezových ocelových ploten černou PET páskou

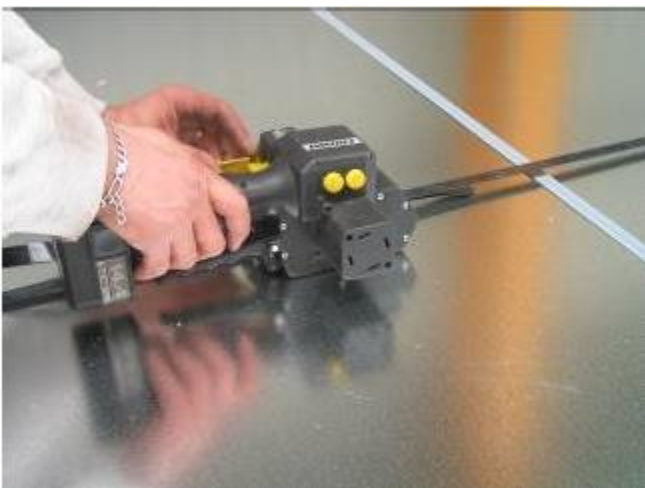
|                                  |   |
|----------------------------------|---|
| <b>General data:</b>             | Pack size: L 800 -6000mm x W 300-1500mm x H 20-400mm (L 31"- 236" x W 11"- 60" x H 1"-8")<br>Product: Stainless steel plates<br>Pack weight: approx: up to 2000kg (4600lb's)  |
| <b>Old Packaging:</b>            | Packs secured with strap HD steel strapping<br>Packs in dedicated wood created and wrapped with Plastic corrugated board  |
| <b>New Packaging:</b>            | Secured with PET strapping - black<br>Packs protected by carton board corners   |
| <b>Tool:</b>                     | P321/ P323 (tools discontinued) New tools P325  |
| <b>Automatic:</b>                | PM100000  |
| <b>Benefit of new packaging:</b> | <input type="checkbox"/> No damaged and rust marked product<br><input type="checkbox"/> Packaging cost saving<br><input type="checkbox"/> Company image<br><input type="checkbox"/> Safety hazard<br>* Psychological interest to use black PET as steel |



Galvanized packs protected with stretched film and steel corner



steel plates pack covered with carton board protection



Strapping operation with P321



Black PET with corner protection

